



IMMO BLOCK I

Plug-and-Play Immobilizer Block for Drive-Block-
Equipped 1995-1998 Porsche 993's
(US/Canada/Saudi)

INSTRUCTION MANUAL

Designed and Engineered by PCAR Products

INSTALLATION

IMMO BLOCK is installed in place of the gong relay. The gong relay is located behind the fuel gauge and is accessed by removing the gauge using automotive trim tools such as those shown in the photos. (Harbor Freight, Amazon, etc.).

Procedure:

- If IMMO BLOCK did not come with a battery installed, install a 9V battery following BATTERY INSTALLATION procedure.
- Make sure Ignition is OFF and key is OUT.
- Using pry tools remove fuel gauge from dash (Figure 1). Make sure tool is under the rubber gasket.
- Work carefully around the perimeter gently backing the gauge out a little at a time.
- Locate the gong relay behind the fuel gauge and remove it by pulling it straight up (Figure 2).



REMEMBER

With the Gong relay out, audible warnings for lights on, key in, and seatbelts will be lost

- Align IMMO BLOCK as shown in Figure 3 and plug into gong relay socket.
- Reinstall fuel gauge.

Installation complete. 



Figure 1 Use plastic pry bars to loosen gauge

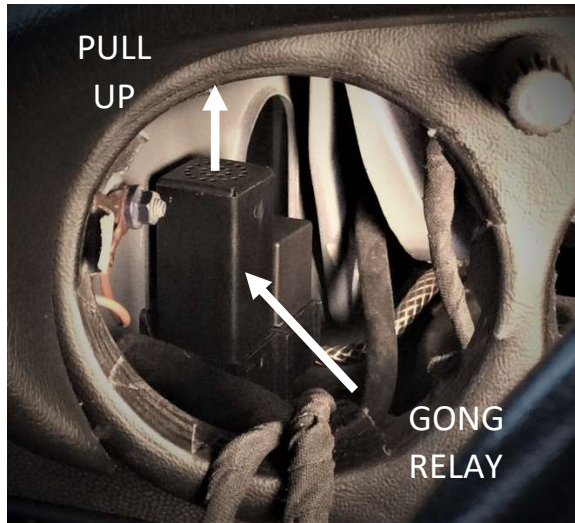


Figure 2 Gong Relay behind fuel gauge

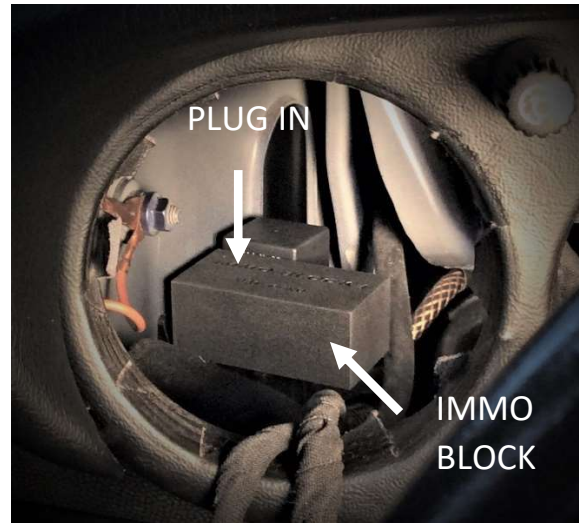



Figure 3 IMMO BLOCK installed

OPERATION

- Wait at least 3 minutes after installation of fuel gauge for IMMO BLOCK to initialize.
- Lock car with FOB.
- Unlock car with FOB. (Remember: doors will auto lock in 1 minute if not opened)

IMMO BLOCK is operational. 

- Confirm operation by waiting more than 3 minutes after your next FOB unlock. Car should start without the FOB. If it does not, repeat above steps.

From now on the vehicle can be started any time with just the physical key - no more double FOB presses, no more lock cycling. IMMO BLOCK works in the background and requires no further action by the operator. Should IMMO BLOCK be removed/reinstalled or the car battery is disconnected/reconnected, lock and unlock with the FOB again to make it operational.

IMPORTANT

THE IMMOBILIZER IS DEFEATED WHEN THE VEHICLE IS UNLOCKED. ALWAYS LOCK YOUR VEHICLE FOR FULL ANTI-THEFT PROTECTION.



BATTERY INSTALLATION

IMMO BLOCK is powered by an internal 9-volt battery that will run for approximately 2 years. Replace battery when voltage goes below 6.5V or IMMO BLOCK stops working. Replace as follows:

- Turn Ignition OFF and remove key.
- Remove IMMO BLOCK from vehicle following INSTALLATION procedure.
- Release latch on bottom of unit by gently pushing the case to the left until the notch disengages from terminal and pull unit out of case (Figure 4)
- Release battery by pushing rear tab outward and rotating battery up and out (Figure 5). Avoid contacting exposed pins.
- Install a fresh 9-volt alkaline battery observing proper polarity and slide case back on.

The IMMO BLOCK case shields and protects sensitive circuitry.
DO NOT OPERATE IMMO BLOCK WITH CASE REMOVED.

- Re-install IMMO BLOCK following INSTALLATION procedure.
- Re- Initialize following procedure in OPERATION.

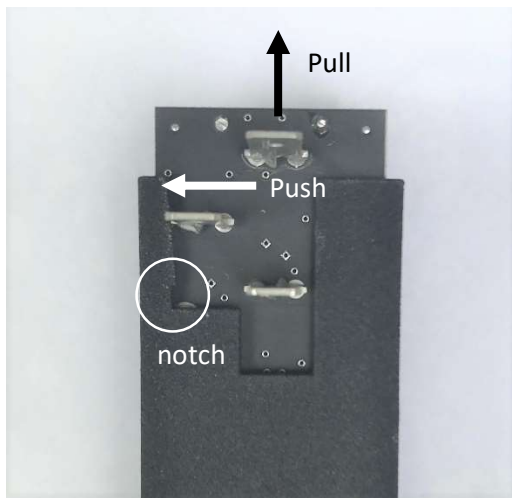


Figure 4 Remove Cover

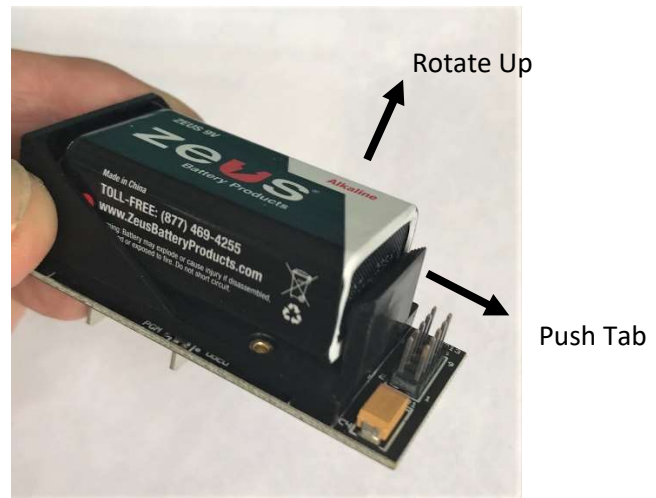


Figure 5 Remove battery



Ph: 860-271-1826

support@EZIMMOBLOCK.com